



arm

Arm Usage Report Training

ARM DesignStart Licensing

07-Nov-2018

Contents

System Overview

Reporting Workflow

Product Certification

Quarterly Usage Reporting



Section 1

System Overview

Section 1 objectives

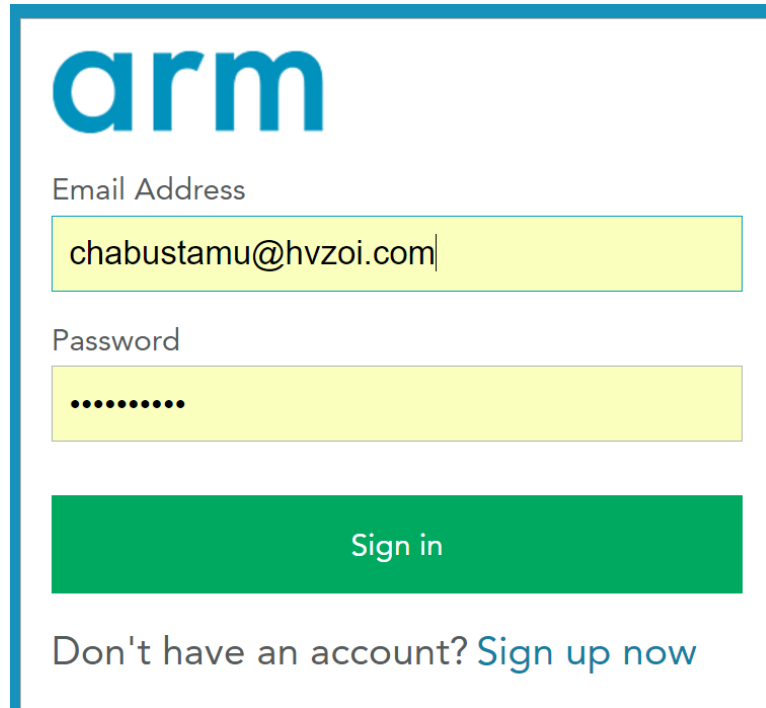
By the end of this section you will be able to:

- Know where to go to access the new usage reporting system
- Know the different modules of the usage reporting system
- Know about Follow-up, table setting and downloading data

New Usage Reporting (UR) System

URL: <https://usagereport.arm.com/login>

You will log into the system using your SSO email address and password.

A screenshot of the ARM login page. The page features the ARM logo at the top left. Below the logo, there are two input fields: one for 'Email Address' containing 'chabustamu@hvzoi.com' and one for 'Password' with masked characters. A green 'Sign in' button is positioned below the password field. At the bottom, there is a link that says 'Don't have an account? Sign up now'.

Home Page

Quick Navigation

My Follow-Ups –follow ups with due date assigned by ARM UR Owner

arm   Emily James

Home



Products



Usage Reports

Follow-Ups

SHOW **OVERDUE (0)** DUE TODAY (0) UPCOMING (0) CLOSED (0)

Name	Type	Description	Priority	Status	Owner	Due
No Follow-ups						

Modules of the UR System (1 of 4)

Products – Add/Edit Products

Usage Reports – Submit/Edit quarterly usage reports

To submit any new products select on the product icon



Products



Usage Reports

If no new products to create and all you want to do is submit your quarterly usage reports select on the usage reports icon

Modules of the UR System (2 of 4)

Any issues with your usage reporting or product submission, we will reach out to you. Any open action items will be seen as a follow-up.

Follow-Ups							
SHOW	<u>OVERDUE (0)</u>	DUE TODAY (0)	UPCOMING (0)	CLOSED (0)			
Name	Type	Description	Priority	Status	Owner	Due	
No Follow-ups							

Modules of the UR System (3 of 4)

Products SHOWING 1 PRODUCT

Items per page: 50 >

Active Filters: SILTERRA MALAYSIA SDN BHD (B7FB2EB8) ×

Product #↑	Brand	Product Name	Certification Status	Certification Submitted By	Certification Submission Date	Certified By	Certification Date
139	DS TEST (02FEA0E8)	ARM 1	Submitted	Emily James	2017-11-07	---	

Icon to download report if you want to export the information into excel

Icon to change table setting of the table. What do you want to display in your view.

Modules of the UR System (4 of 4)

- The detailed Usage Report shows the current and past 4 quarters wafer quantity and current and updated Product Status, as well as the product certification status

Reporting / Usage Reports / FY Q1 2017

TESTING ENTITY Q4 2016 SHOWING 5/5 PRODUCTS ACCEPTED

Brand ?	Product Name ?	Certification Status ?	Current Product Status ?	Updated Status ?	Q4 2015 Wafer Quantity	Q1 2016 Wafer Quantity	Q2 2016 Wafer Quantity	Q3 2016 Wafer Quantity	Current Quarter Wafer Quantity ?
TESTING ENTITY	PONY	Submitted	MPW	MPW	N/A	N/A	N/A	N/A	25
TESTING ENTITY	Test1234	Submitted	Full Mask	Full Mask	N/A	N/A	N/A	N/A	2000
TESTING ENTITY	ARM Test	Certified	Full Mask	Full Mask	N/A	N/A	N/A	N/A	2000
TESTING ENTITY	Benz	In Review	In Design		N/A	N/A	N/A	N/A	0
TESTING ENTITY	ABCD-1		In Design		N/A	N/A	N/A	N/A	0

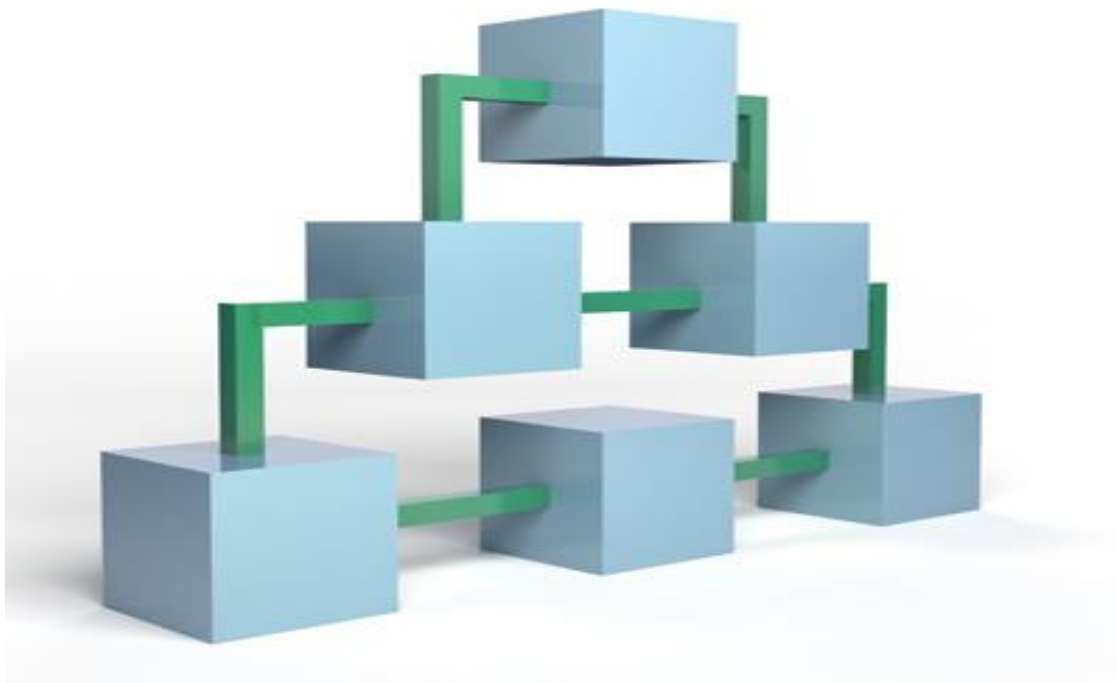
End of Section 1

You have completed the first section, on system overview

You are now able to

- Know where to go to access the new usage reporting system
- Know the different modules of the usage reporting system
- Know about Follow-up, table setting and downloading data





Section 2

Reporting Workflow

Section 2 objectives

By the end of this section you will be able to:

- Know the benefit of separating Certification and Usage Reporting
- Know the submission period
- Know the workflow when a new product is created
- Know the workflow when a product exists already

Product Certification and Usage Reporting

Key benefits:

- Can add product and submit for review and obtain certification anytime in the quarter. No longer have to wait until reporting window to add products for certification.
- Once product has been certified, licensee will no longer have to provide further validation and evidence
- Ease of submitting usage report when product has been certified.
 - ONLY need to submit proposed product phase and wafer quantity

Submission Periods

Product Certification

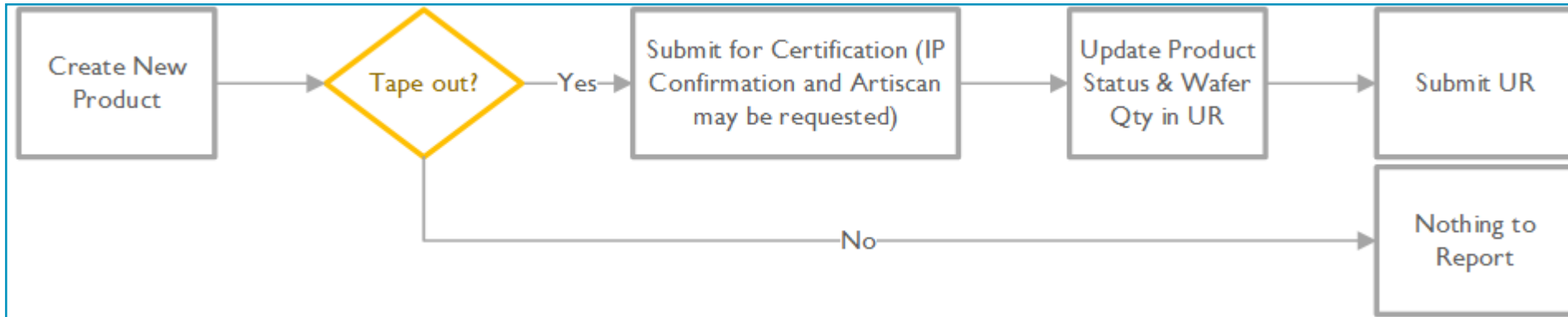
Anytime throughout the quarter. For new tape outs, preferably right after product tape out for more accurate data

Usage Reporting

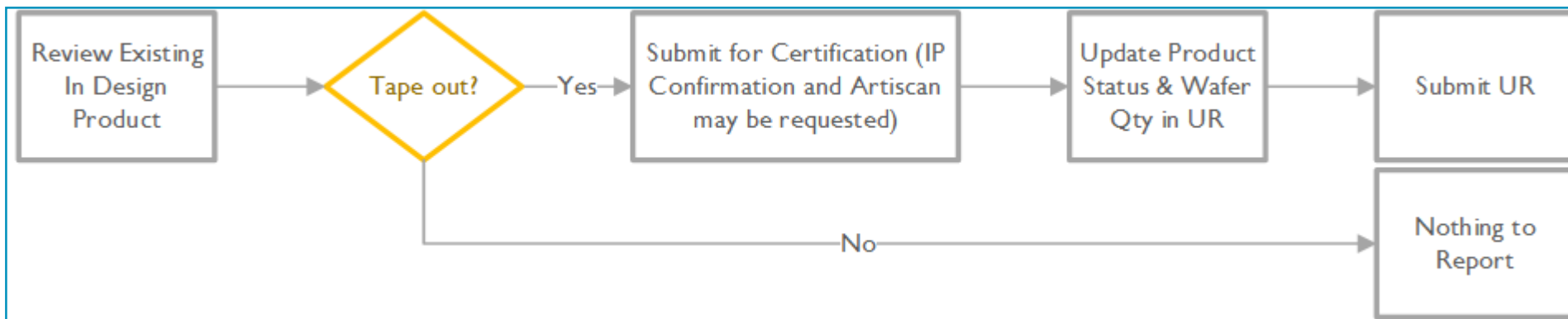
January 1-31	(Q4 report)
April 1-30	(Q1 report)
July 1-31	(Q2 report)
October 1-31	(Q3 report)

Submission Workflow (1 of 2)

For new products

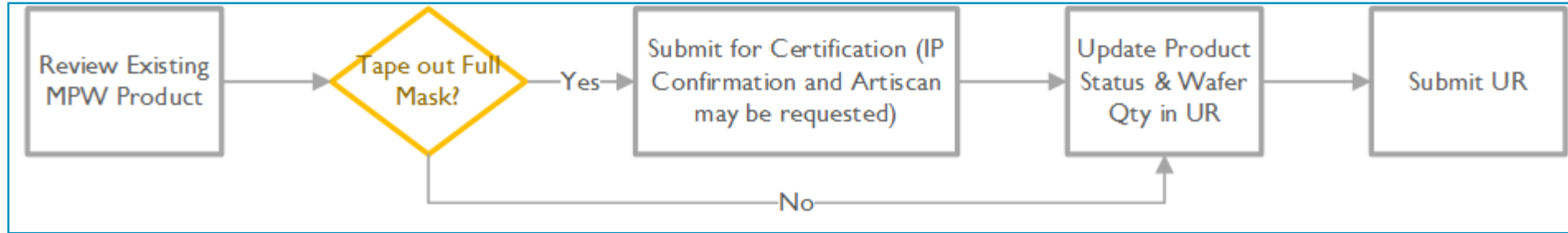


- For existing products in design



Submission Workflow (2 of 2)

- For existing products taped out in MPW



- For existing products taped out in Full Mask



End of Section 2

You have completed the second section, on reporting workflow

You are now able to

- Know the benefit of separating Certification and Usage Reporting
- Know the submission period
- Know the workflow when a new product is created
- Know the workflow when a product exists already





Section 3

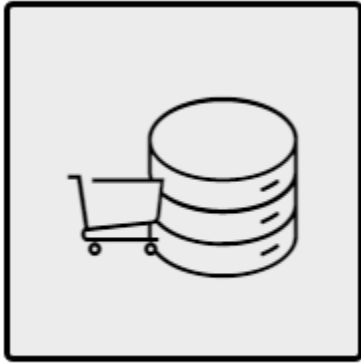
Product Certification

Section 3 objectives

By the end of this section you will be able to:

- Know how to create a new product
- Know how to create a revision of an existing product
- Know what documents are needed for a product to get certified
- Know what type of product needs to get certified
- Know what would happen when UR owner is reviewing the product submitted for certification
- Know what would happen if products that are supposed to get certified do not get certified in time

Creating New Product (1 of 5)



Products

To submit any new products select on the product icon

Click on the + sign to add a new product

Products

SHOWING 1 PRODUCT

Search



Items per page: 50 >



Active Filters: SILTERRA MALAYSIA SDN BHD (B7FB2EB8) X

Product #↑	Brand	Product Name	Certification Status	Certification Submitted By	Certification Submission Date	Certified By	Certification Date
139	DS TEST (02FEA0E8)	ARM 1	Submitted	Emily James	2017-11-07	---	---

Creating New Product (2 of 5)

Next to each field, there will be cursor  to indicate the definition

Basic Product Info

Entity – pre-populated as your company name, not editable

Product Name – product name, equals to project name in the old system

Revision of Product – pre-populated if you click “Revision” of an existing product, or you can choose from the dropdown of all your other existing products that you want to make revision of

Product Category – choose from the dropdown list of the application

Part # (Product) Status – dropdown list: In Design, MPW, In Production, End of Life, Cancelled (definition of each status on next slide)

Product Status

Product Status	Definition
In Design	Back end views of ARM IP have been downloaded and either evaluation work or chip design work have begun, but no tape out yet
MPW	MPW/Shuttle Run tape out
In Production	Multi-Layer-Mask or full mask tape out in either prototype or production
End of Life	Tape out products terminated or reached end of life
Cancelled	In Design products canceled, not reaching to tape out, or no longer exist (add note on why product cancelled)

Creating New Product (3 of 5)

Foundry Details

Foundry – Type in the foundry that product is taped out at

Foundry Part # – the fab ID for wafers

Tape out Date – the date that the tape out happens

Services

Design Service Provider – If the product used any design service provider, enter the name of the Design Service Provider

Design Service Email Address– Email address of the Design Service Provider that you are working with

Creating New Product (4 of 5)

ARM IP*

Smart Filter + Multiple Selection

Any of the 5 filters can be used to generate a multiple selection list

The screenshot shows a 'Filter By' section with five filters: ARM IP (16 nm), Process (CLN16FCLL001), Product Family (empty), Foundry (TSMC), and Product Group (Logic IP). A 'Clear Filters' button is located to the right of the filters. Below the filters is a table with four rows, each with a checked checkbox in the first column. The table columns are: IP, 16 nm, TSMC, CLN16FCLL001, Logic IP, and TSMC CLN16FCLL001 SC7PO, TSMC CLN16FCLL001 SC9CP, and TSMC CLN16FCLL001 Documentation. At the bottom right, there are 'Cancel' and 'Add Selected' buttons.

IP	16 nm	TSMC	CLN16FCLL001	Logic IP	TSMC CLN16FCLL001 SC7PO
<input checked="" type="checkbox"/>					
<input checked="" type="checkbox"/>					
<input checked="" type="checkbox"/>					
<input checked="" type="checkbox"/>					

Creating New Product (5 of 5)

Files

Add Artiscan or ARM Ip Confirmation files here



Files

Artiscan File Browse...

ARM IP Confirmation File Browse...

Notes ?

Click on Certify Product

By saving and certifying the product, a summary page will be shown

End of Section 3

You have completed the third section, on product certification

You are now able to

- Know how to create a new product
- Know how to create a revision of an existing product
- Know what documents are needed for a product to get certified
- Know what type of product needs to get certified
- Know what would happen when UR owner is reviewing the product submitted for certification
- Know what would happen if products that are supposed to get certified do not get certified in time





Section 4

Quarterly Usage Reporting

Section 4 objectives

By the end of this section you will be able to:

- Know where and how to submit usage report
- Know what needs to be updated for quarterly usage report
- Know the meaning of “Nothing to Report” and when it can be used



Quarterly Usage Reporting (1 of 3)



Usage Reports

To submit usage reports for the reporting quarter click on usage reports icon

Click on New Usage Report

Usage Reports

SHOWING 1 USAGE REPORT

Items per page: 50 >

Import

New Usage Report



Usage Report #↑	Entity	Report Status	Reporting Quarter	Date Submitted	Reported By	Date Approved	Approved By	Date Rejected
24	DS TEST (02FEA0E8)	REJECTED	Q3 2017	2017-11-03	Emily James	---	---	2017-11-07

Quarterly Usage Reporting (2 of 3)

Input Wafer quantity and any changes to product status and submit quarterly reports

Input Nothing to Report if no wafer information or status changes

Q3 2017 SHOWING 2/2 PRODUCTS DUE 2017-10-30

Prefer to complete report in a spreadsheet?

[Download Form](#) [Upload Form](#) [Nothing to Report](#)

Brand ?	Product Name ?	Foundry Part # ?	Certification ?	Current Product Status ?	Updated Status * ?	Current Quarter Wafer Quantity * ?	Notes
DS TEST (02FEA0E8)	TestFAQ	P123456	Not Certified	MPW	MPW >	<input type="text"/>	<input type="text"/>
DS TEST (02FEA0E8)	ARM 1	S5409	Not Certified	In Production	In Production ▶	<input type="text"/>	<input type="text"/>

Quarterly Usage Reporting (3 of 3)

- Submitted Usage Report is subject to question and need to be approved by UR Owners

REPORTING RANGE BEING CERTIFIED: JUL - SEP 2016

By pressing 'Submit', you hereby agree that ARM shall be permitted to disclose your Confidential Information to: (i) subsidiaries of ARM; (ii) the applicable foundry solely to the extent required and for the purpose of verifying the foundry part number, related wafer information, and information reported as part of your usage reporting obligations, subject to such entities being bound by confidentiality. ARM shall have the right to disclose that you are a customer of ARM. By submitting, you are representing and warranting that the Quarterly Usage Report fully and accurately reflects your usage of ARM Physical IP products for the specified quarter, and that you have fully complied with your legal reporting requirements.

Cancel

Yes

Thank You!

Danke!

Merci!

谢谢!

ありがとう!

Gracias!

Kiitos!

arm